



GORILLA® LOCK INSTALLATION GUIDELINES

The Gorilla Lock Deck is a wood grained PVC deck board. The patented (Patent number 6,594,961) deck boards are designed to create a substantial deck surface. When installed properly and with the limitations listed in these instructions, the Gorilla Lock Deck will provide years of service. Proper installation of the deck boards and the preparation of your substructure are both very important factors in constructing a good deck.

The examples and instructions in this document are for illustration purposes only. Any construction or use of these products must be in accordance with all local building codes. The consumer or contractor assumes all risks and liability associated with the fabrication or installation of these products. This includes and is not limited to improper installation, misuse, neglect, accidents, improper handling or alterations to these products.

REQUIRED TOOLS AND MATERIALS:

- Power Drill with Deck Screw Driver
- Safety Glasses
- Pencil
- 6' or Longer Level
- Multi Tooth Carbide Blade Power Saw
- Jig Saw for Cutting the Deck Boards for Posts
- Tape Measure
- Chalk Line
- Square

MOUNTING TRACK INSTALLATION:

The Gorilla Lock Deck is a wood grained PVC deck board. The patented (Patent number 6,594,961) deck boards are designed to create a substantial deck surface. When installed properly and with the limitations listed in these instructions, the Gorilla Lock Deck will provide years of service. Proper installation of the deck boards and the preparation of your substructure are both very important factors in constructing a good deck.

This guide is intended to address most new deck construction and retrofitting applications. Deck substructure construction is not covered in this guide.

1) Prior to installation, consult your local Building Code Department to address applicable Building Codes, including those for the deck substructure and railing.

2) The substructure must be constructed according to local building codes. The substructure must be flat, such that the tops of the joists are all at the same level, and square.

3) Gorilla Lock should be installed on joists spaced at 16" on center. The product should not be installed over existing deck boards.

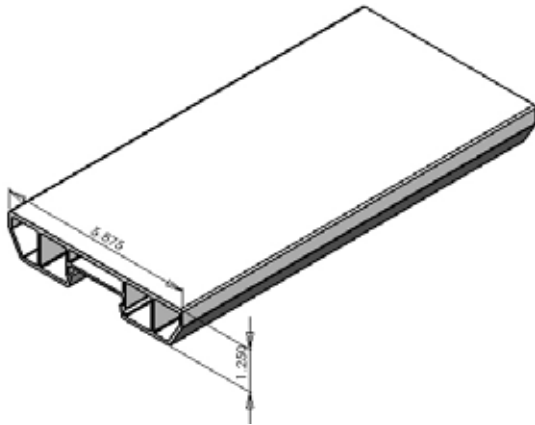
4) All hardware must be weather-resistant. The deck board mounting track is to be installed with #8 1-1/2" minimum pressure treated lumber compatible screws

5) The track is available in a 1'-0" length which contains two pre-mounted flange assemblies. The track is configured with 90° tabs to help align track members on the joist. The track also contains break-off lines which can be easily snapped/ cut off.



DECK BOARD INSTALLATION:

- Establish a control line and mark a point on opposite ends of the deck and then snap an alignment chalk line.
- Place the square track end on the control line and fasten down the track with screws at the holes centered at the flange assembly. (Two attachment locations per 1' track). Use recommended # 8x 1-1/2" inch stainless steel screws for fastening. Install the track on the remaining joists using the control line for alignment.



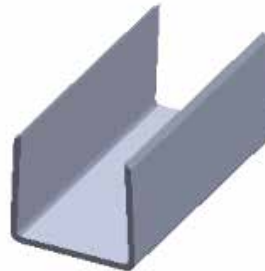
- Install the deck boards by placing the recessed portion of a board over the flange assembly while aligning the ends of the board to the desired location. Step onto the center of the board and “snap” onto the mounting flange. Continue “snapping” down the length of the board until all flanges are fully engaged to the deck board.

- Subsequent tracks to be installed in a similar manner as described above. Connect the second track using the rounded button tabs on the track ends. This connection spaces the tracks together allowing for a uniform alignment of deck boards.

- For the last row of deck boards, it may be necessary to cut the track to length.

- If the last row is a partial-width plank, only the outside edge (approx. one inch) of the deck plank should be ripped. Do not rip into the recessed slot in the underside of the deck board.

- Finish edges with Trim Channel.



- When joining or butt-splicing runs of deck boards, add 2" x 6" (minimum) joists to form a triple joist at the splice point. This will allow placement of the mounting tracks on either side of the splice.

