



ADVANTAGE

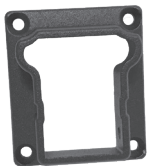
ALUMINUM GATE KIT ASSEMBLY GUIDE

RECOMMENDED TOOLS

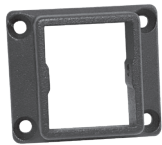
- | | |
|----------------------------|---------------------|
| Safety Glasses | Rubber Mallet |
| Tape Measure and Pencil | Power Drill |
| Saw with Appropriate Blade | #2 Square Drive Bit |
| | 1/8" Drill Bit |

WHAT'S INCLUDED

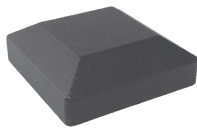
- | | |
|--------------------------------------|------------------------------------|
| 2 – 2 1/2" x 36 3/4" Gate Vertical | 2 – Bottom Level Brackets |
| 1 – Top and 1 – Bottom Rail 46" Long | 1 – Standard Screw Pack, Flat Head |
| 10 – 3/4" x 33" Pickets | 5 – Pan Head Screws |
| 2 – Top Level Brackets | 2 – Post Caps |



Top Level Bracket



Bottom Level Bracket



Post Cap

INSTRUCTIONS

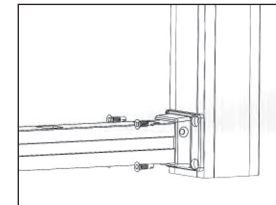
Always check local building codes before beginning installation.

Read all instructions before beginning.

- Gate kits are precut to fit 52 3/4" gate opening. Measure your gate opening, If your opening is less than 52 3/4" then rails will need to be cut to the correct length. To get the correct rail length, take the space between the posts and subtract 6 3/4". This will allow for the 2 1/2" gate uprights and allow 7/8" on each side of the gate for the latch and hinge.

Example: If your finished gate opening is 41" then subtract 6 3/4" and cut your rails 34 1/4". When marking your rails to cut, stay 1" away from the picket holes so the pickets will not interfere with the brackets. You may have to cut more off

one end than the other but make sure the space from the last picket to the end of the rail ends up equal to keep the gate the same on both ends.

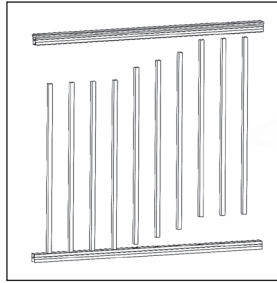


- Fasten brackets to the gate uprights. Keep the bottom edge of the bottom rail brackets 5/8" from the bottom of the uprights and set the top brackets 1 1/2" from the edge of the bracket to the top of the gate uprights

Cutting Tip

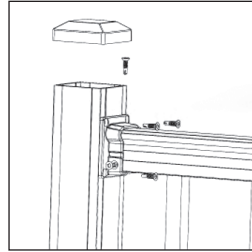
Use a fine tooth blade made for cutting aluminum. Rest material on non abrasive material to prevent scratches.

OVER



3. Set the bottom rail on solid surface that will not scratch the rail. Insert pickets. Set top rail on top of pickets and insert pickets. Make sure they are seated all the way in to the rail.
4. **Option:** At this point if you want, you can use an epoxy inside the brackets for added strength. Make sure the epoxy does not press out of the bracket and become exposed.
5. Insert ends of the rails into the four brackets.
6. **Important:** Make sure gate is square and kept square during last steps of assembly.
7. Fasten rails to bracket with flat head screws provided.

8. **Important:** Drill an 1/8" hole through the top of each bracket into the top of the rails. Screw a pan head screw into each of these holes.



9. Place cap on top of the gate vertical.
10. If using epoxy be sure to wait the proper time before hanging the gate for the epoxy to set per the manufacturers instructions.
11. Install gate hardware per manufacturer's instructions.

- These directions are only a guide and may not address every situation.
- Always wear proper safety equipment while assembling and installing.
- The installer should obtain all required building permits and follow all installation procedures in accordance with applicable building code requirements.
- JAM Systems shall not be held liable for improper or unsafe installations.
- Applying paint, other than JAM Systems touch up paint, will void your warranty.



Manufactured in the U.S.A.