



**NEW!**

# ADVANTAGE ALUMINUM RAILING



[jamvinyl.com](http://jamvinyl.com)



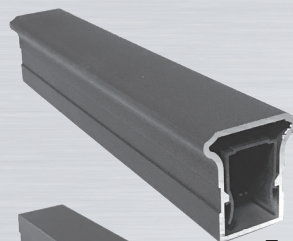
Made in the USA



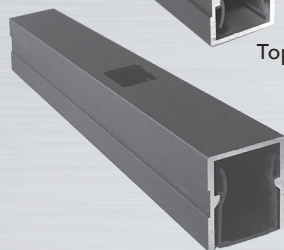


## FEATURES

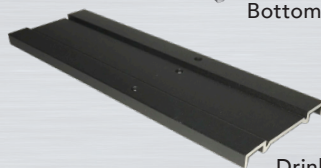
- Railing Heights 36" and 42" Tall
- Two Rail System | Three Rail System
- 3/4" Square Pickets
- Section Lengths: Level – 5', 6', 7' and 8'  
Stair – 6' and 8'
- New Raised Panel Post with Built in Leveling System  
Post Options: 2-1/2" and 3-1/2"  
Sizes: 2-1/2" and 3-1/2"  
Heights: 38" and 48" Tall
- Easy to Install Brackets
- Rattle-Free Picket Retainer
- Limited Lifetime Warranty
- Durable and Low Maintenance
- AAMA 2604 Powder Coating
- Code Approved for Residential or Commercial Construction



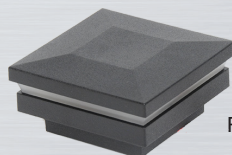
Top Rail



Bottom Rail



Drink Rail Adapter



Lighted Post Caps



Surface Mounted Post



Structural Porch Post  
3-1/2"x3-1/2"x10'

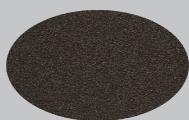


4-Piece Post Wrap  
6"x6"x10'

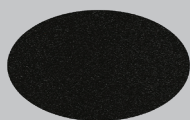
## COLOR OPTIONS



White Fine Texture



Bronze Fine Texture



Black Fine Texture



Manufactured in the U.S.A. by

