



ADVANTAGE

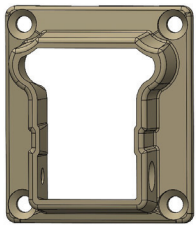
ALUMINUM HORIZONTAL CABLE GATE KIT ASSEMBLY GUIDE

RECOMMENDED TOOLS

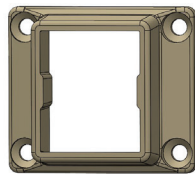
- | | |
|----------------------------|---------------------|
| Safety Glasses | Power Drill |
| Tape Measure and Pencil | #2 Square Drive Bit |
| Saw with Appropriate Blade | 1/8" Drill Bit |
| | Tools from Tool Kit |

WHAT'S INCLUDED

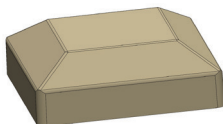
- | | |
|--|-----------------------------|
| 2 – 2 1/2" x 36 3/4" Gate Vertical | 5 – Pan Head Screws |
| 1 – Top and 1 – Bottom Rail 41 1/4" Long | 2 – Post Caps |
| 2 – Top Level Brackets | 1 – Cable Support Picket |
| 2 – Bottom Level Brackets | 2 – Support Picket Mounting |
| 1 – Standard Screw Pack, Flat Head | 2 – Tension Fitting Kits |
| | Use Cable from Railing |



Top Level Bracket



Bottom Level Bracket

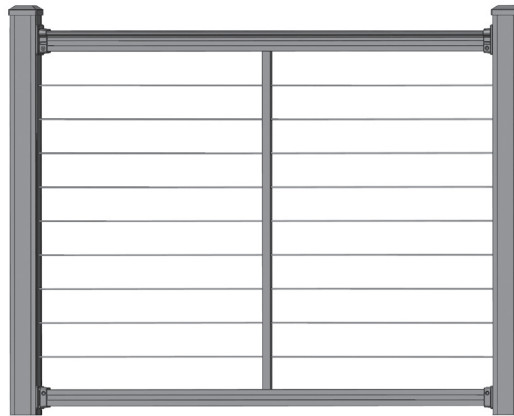


Post Cap

INSTRUCTIONS

Always check local building codes before beginning installation.

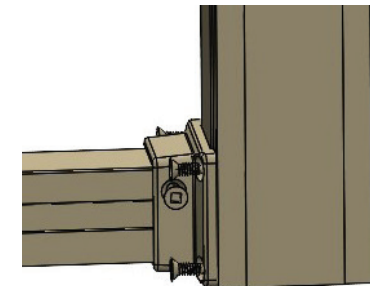
Read all instructions before beginning.



- Gate kits are precut to fit 48" gate opening. Measure your gate opening, If your opening is less than 48" then rails will need to be cut to the correct length. To get the correct rail length, take the space between the posts and subtract

6 3/4". This will allow for the 2 1/2" gate uprights and allow 7/8" on each side of the gate for the latch and hinge.

Example: If your finished gate opening is 41" then subtract 6 3/4" and cut your rails 34 1/4".



- Fasten brackets to the gate uprights. Keep the bottom edge of the bottom rail brackets 5/8" from the bottom of the uprights and set the top rail brackets on

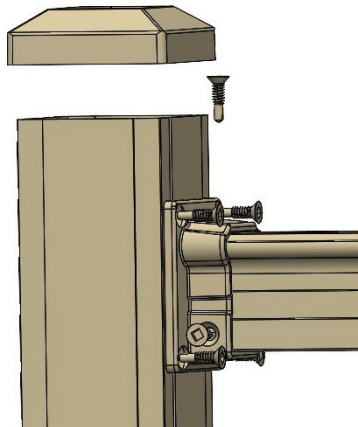
Cutting Tip

Use a fine tooth blade made for cutting aluminum. Rest material on non abrasive material to prevent scratches.

OVER

the gate uprights so they match the top rail of the installed sections.

3. **Option:** At this point if you want, you can use an epoxy inside the brackets for added strength. Make sure the epoxy does not press out of the bracket and become exposed.
4. If rails are longer than 36" install cable support picket in center of rails.
5. Insert ends of the rails into the four brackets.
6. **Important:** Make sure gate is square and kept square during last steps of assembly.
7. Fasten rails to bracket with flat head screws provided.



8. **Important:** Drill an 1/8" hole through the top of each bracket into the top of the rails. Screw a pan head screw into each of these holes.
9. Place cap on top of the gate vertical.
10. If using epoxy be sure to wait the proper time before hanging the gate for the epoxy to set per the manufacturers instructions.
11. Cut cables 2 1/2" longer than top rails.
12. Install cables following cable tensioner fitting assembly guide.
13. Grip the cable with the cable gripping pliers to prevent it from spinning, then use a 3/16" Allen wrench to turn the tensioner.
14. Start by tightening a middle cable and alternate up and down tighten cable from the middle towards the top and bottom of the post.
15. Use a tension gauge to tighten cable to desired tension. Recommend tension between 100 and 200 lbs. **Do not exceed 200 lbs.**
16. Install grommets on gate upright.
17. Install gate hardware per manufacturer's instructions.

- These directions are only a guide and may not address every situation.
- Always wear proper safety equipment while assembling and installing.
- The installer should obtain all required building permits and follow all installation procedures in accordance with applicable building code requirements.
- JAM Systems shall not be held liable for improper or unsafe installations.
- Applying paint, other than JAM Systems touch up paint, will void your warranty.



Manufactured in the U.S.A.

